

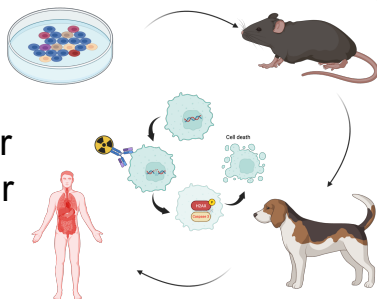
Targeting by...

Antibody

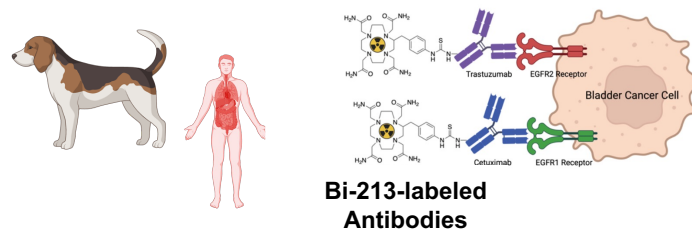
- Bladder cancer
- Ovarian cancer

MAA

- Breast cancer
- Melanoma

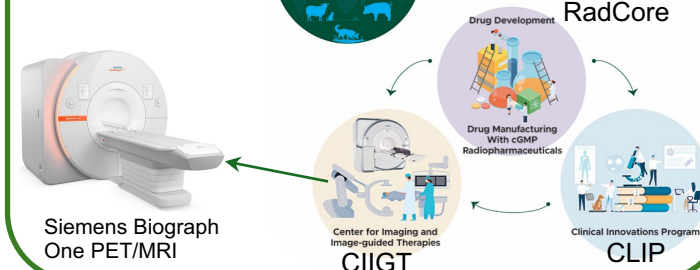


Zinn Lab Research



One Team... One Health

Three Emerging MSU Programs
Are Advancing Clinical Trials to
Improve Animal and Human Health



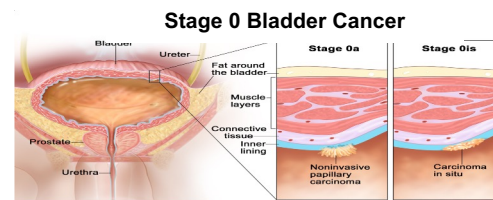
Clinical Translation

The Clinical Innovations Program (CLIP) Advances the standard of care in veterinary and human medicine through high-quality clinical trials

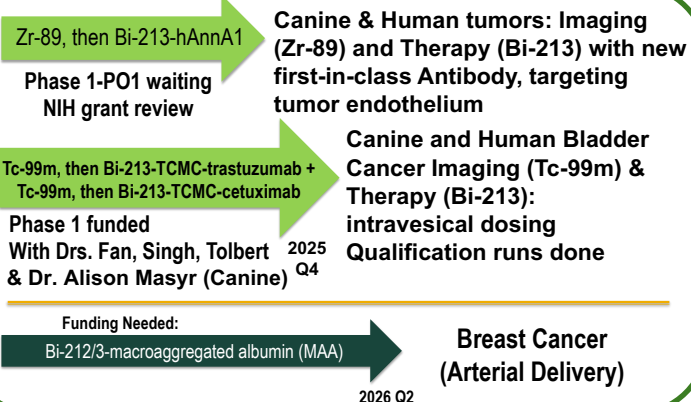
Radiochemistry and Radiopharmacy Solutions (RadCore) FDA guidelines for cGMP under 21 CFR parts 211/212, USP <797> & USP <800>

Targeted Radiation therapy Using Alpha Particles

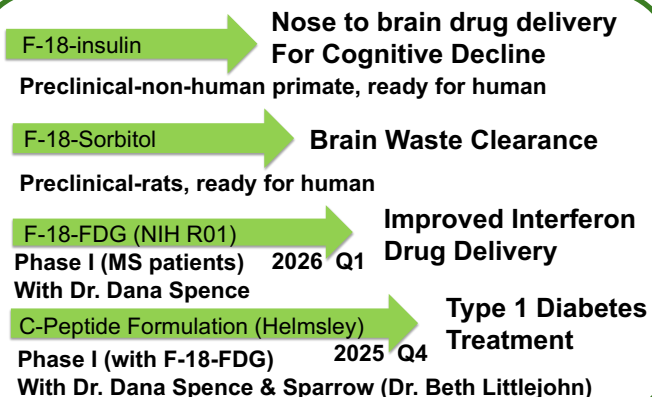
Radioisotopes:
Bi-212, Bi-213



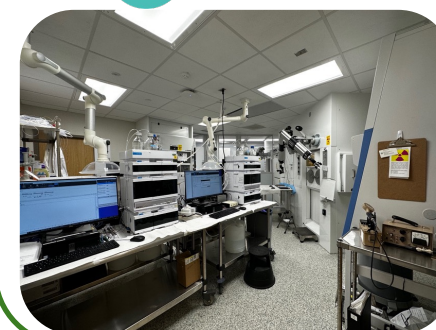
Pipeline (Cancer Imaging & Therapy)



Pipeline (Other Imaging & Therapy)



Drug Manufacturing (RadCore)



Clean-room
With
Special
Equipment

